

Signify Classified - Internal
Cooper Lighting Solutions Photometric Lab
1121 Highway 74 South
Peachtree City, GA 30269



Scaled data based on original data using
LM-79-2019 Approved Method: Electrical and Photometric Measurements of Solid-
State Lighting Products

Test Report Prepared for

Cooper Lighting Solutions

Brand: McGRAW-EDISON

Report Number: P643926

Luminaire Tested: GWS-SA6F-830-U-SLL-W-HSS

Issue Date: 1/10/2023

Test Information

Test Method: LM-79-2019
Report Number: P643926
TEST IS SCALED FROM IESNA LM-79-08 TEST DATA (G2-2209-782-40)
Test Lab: COOPER LIGHTING SOLUTIONS
Issue Date: 1/10/2023
Manufacturer: COOPER LIGHTING SOLUTIONS
Product Line: McGRAW-EDISON
Catalog Number: GWS-SAGF-830-U-SLL-W-HSS
Description: GALLEON WALL SLIM LUMINAIRE. (6) LIGHTSQUARES WITH 16 LEDS EACH AND
SPILL LIGHT ELIMINATOR LEFT OPTICS WITH HOUSE SIDE SHIELD
Light Source: (96) 3000K CCT, 80 CRI LEDS
Ballast/Driver: -

Summary

Lumens per Lamp: N/A
Luminaire Lumens: 23938.3 lumens
Efficiency: N/A
Efficacy: 64.2 lumens/watt
Luminous Opening: Rectangular (W 2' x L: 1' x H: 0')
IES Classification: Type III - Short
BUG Rating: B2 - U0 - G4

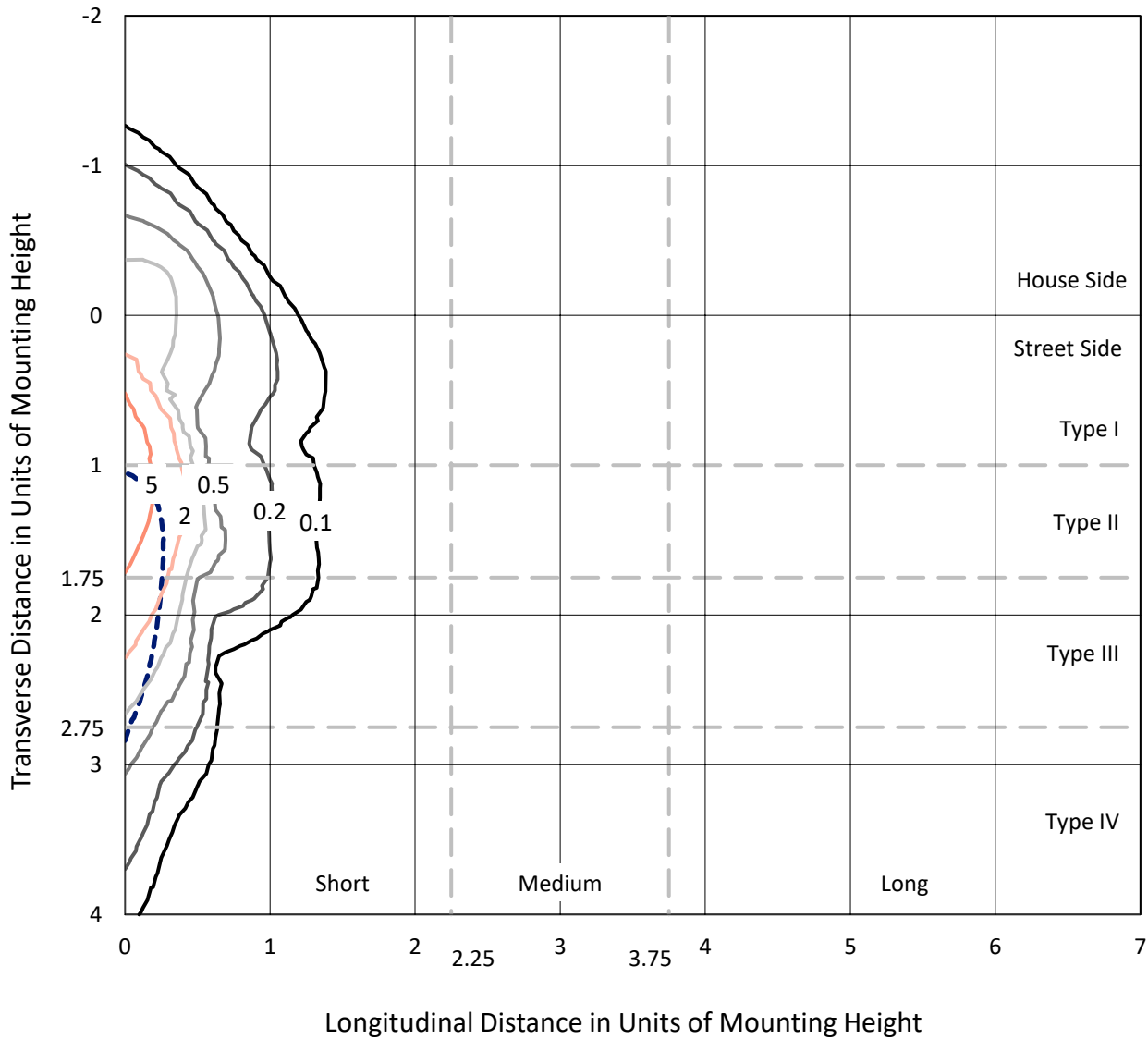
Input Watts (W): 372.6
Input Voltage (V): 120
Input Current (Ain): NR
Voltage Rise (V): NR
Power Factor: NR
Total Harmonic Distortion (THDi): NR
Frequency (hertz): 0
Stabilization Time: NR
Operation Time: NR
Ambient Temperature (°C): NR
Test Distance: 28.75 FT



REPORT NUMBER: P643926
 CATALOG NUMBER: GWS-SA6F-830-U-SLL-W-HSS

Iso-Footcandle Lines of Horizontal Illumination

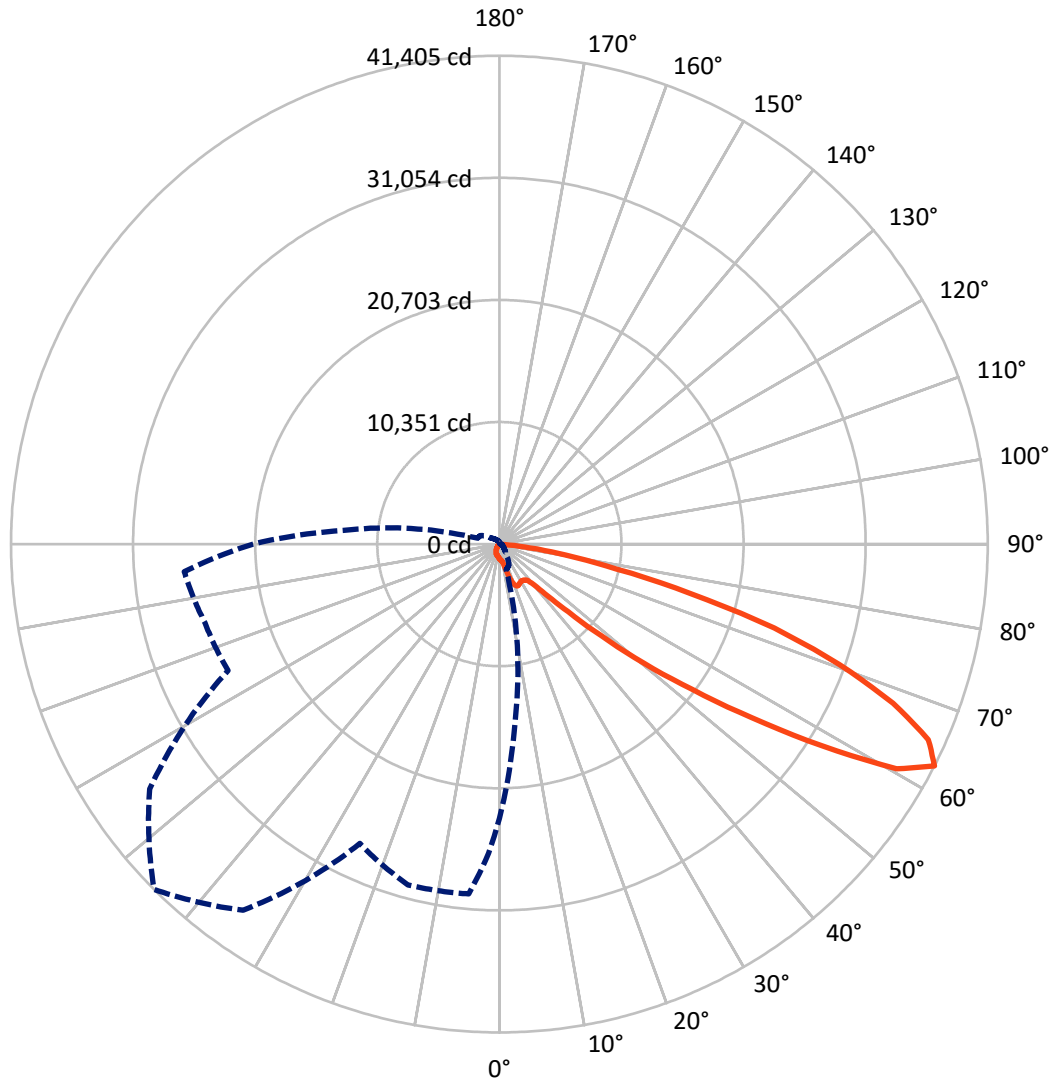
× Max cd
 - - - 1/2 Max cd



Based on 25 foot mounting height. Maximum calculated value = 6.8 fc
 Type III - Short - N/A

REPORT NUMBER: P643926
CATALOG NUMBER: GWS-SA6F-830-U-SLL-W-HSS

Luminous Intensity Polar Plot



— Vertical Plane Through 315-Deg Lateral - - - Horizontal Cone Through 62.5-Deg Vertical

REPORT NUMBER: P643926
 CATALOG NUMBER: GWS-SA6F-830-U-SLL-W-HSS

FLUX DISTRIBUTION:

		Downward	Upward	Total
House Side	Lumens	2781.3	0.0	2781.3
	% Fixture	11.6	0.0	11.6
Street Side	Lumens	21157.0	0.0	21157.0
	% Fixture	88.4	0.0	88.4
Total	Lumens	23938.3	0.0	23938.3
	% Fixture	100.0	0.0	100.0

ZONAL LUMENS:

Zone	Lumens	% Fixture
0°-10°	107.2	0.4
10°-20°	367.4	1.5
20°-30°	830.1	3.5
30°-40°	1430.1	6.0
40°-50°	2697.7	11.3
50°-60°	6023.1	25.2
60°-70°	8055.8	33.7
70°-80°	4039.7	16.9
80°-90°	387.2	1.6
90°-100°	0.0	0.0
100°-110°	0.0	0.0
110°-120°	0.0	0.0
120°-130°	0.0	0.0
130°-140°	0.0	0.0
140°-150°	0.0	0.0
150°-160°	0.0	0.0
160°-170°	0.0	0.0
170°-180°	0.0	0.0
0°-90°	23938.3	100.0
0°-180°	23938.3	100.0

Coefficient of Utilization



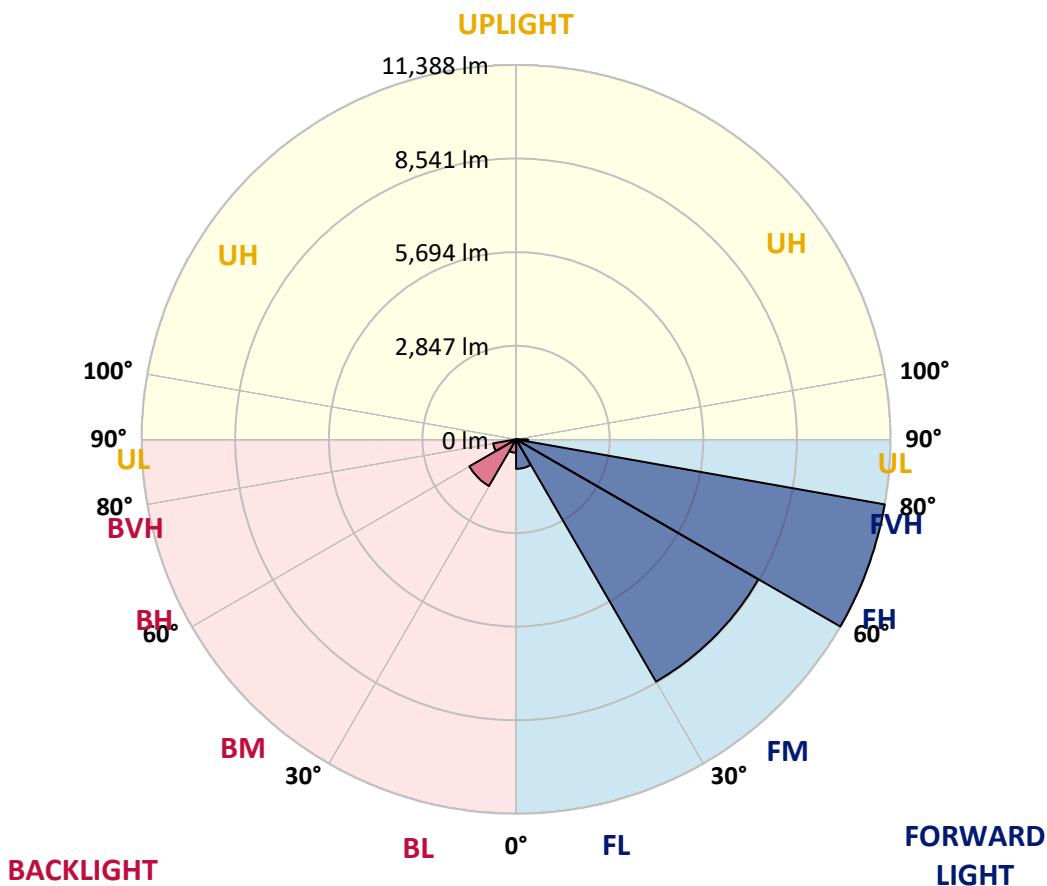
REPORT NUMBER: P643926

CATALOG NUMBER: GWS-SA6F-830-U-SLL-W-HSS

LUMINAIRE CLASSIFICATION SYSTEM LUMEN TABLE AND BUG RATING:

Zone	Lumens	% Fixture	Zone Rating/Lumen Limit		
			B	U	G
FL (0°-30°)	896.5	3.7			
FM (30°-60°)	8510.8	35.6			
FH (60°-80°)	11388.2	47.6			G4/12000
FVH (80°-90°)	361.4	1.5			G3/500
BL (0°-30°)	408.2	1.7	B1/500		
BM (30°-60°)	1640.0	6.9	B2/2500		
BH (60°-80°)	707.3	3.0	B2/1000		G2/1000
BVH (80°-90°)	25.8	0.1			G1/100
UL (90°-100°)	0.0	0.0		U0/0	
UH (100°-180°)	0.0	0.0		U0/0	

BUG Rating: B2-U0-G4
 Type III Short





REPORT NUMBER: P643926

CATALOG NUMBER: GWS-SA6F-830-U-SLL-W-HSS

CANDELA DISTRIBUTION (FULL):

	0°	2°	5°	15°	25°	35°	45°	55°	65°	75°	85°
0°	1241.5	1241.5	1241.5	1241.5	1241.5	1241.5	1241.5	1241.5	1241.5	1241.5	1241.5
2.5°	1227.3	1224.5	1218.8	1201.8	1187.6	1179.1	1162.1	1162.1	1159.3	1153.6	1142.3
5°	1187.6	1176.3	1164.9	1133.8	1099.8	1079.9	1057.2	1054.4	1054.4	1048.7	1045.9
7.5°	1125.3	1113.9	1099.8	1048.7	1017.6	997.7	977.9	975.0	966.5	966.5	966.5
10°	1091.3	1074.2	1051.6	994.9	963.7	946.7	932.5	924.0	918.4	909.8	907.0
12.5°	1164.9	1133.8	1085.6	983.5	941.0	918.4	901.3	895.7	878.7	867.3	858.8
15°	1394.5	1318.0	1221.6	1009.1	932.5	898.5	875.8	864.5	850.3	830.5	816.3
17.5°	1771.5	1661.0	1499.4	1091.3	924.0	881.5	853.2	833.3	813.5	790.8	773.8
20°	2293.0	2128.6	1935.9	1241.5	924.0	861.7	827.6	802.1	773.8	748.3	728.4
22.5°	2956.3	2791.9	2463.1	1496.6	935.4	836.2	796.5	762.5	728.4	705.8	683.1
25°	3698.9	3466.5	3160.4	1805.5	966.5	802.1	759.6	725.6	694.4	666.1	640.6
27.5°	4526.6	4274.3	3866.1	2244.9	1034.6	768.1	719.9	688.8	660.4	632.1	598.1
30°	5289.0	5138.8	4722.1	2772.1	1145.1	745.5	688.8	660.4	632.1	595.2	564.0
32.5°	6204.5	5938.1	5595.1	3373.0	1292.5	722.8	663.3	623.6	600.9	566.9	532.9
35°	7125.7	6899.0	6448.3	4112.7	1456.9	700.1	632.1	595.2	575.4	535.7	498.9
37.5°	8075.3	8024.2	7579.2	4931.9	1618.5	674.6	595.2	572.6	552.7	507.4	464.8
40°	9010.6	8917.1	8506.1	5867.2	1717.7	646.2	564.0	549.9	527.2	476.2	428.0
42.5°	9906.3	9835.4	9435.8	6762.9	1703.5	620.7	532.9	515.9	498.9	447.8	388.3
45°	11006.0	10889.8	10385.3	7426.2	1558.9	649.1	501.7	473.3	470.5	422.3	348.6
47.5°	13063.8	12681.2	11825.2	7936.4	1414.4	722.8	467.7	433.7	453.5	396.8	309.0
50°	15946.4	15495.8	14257.1	8333.2	1411.5	819.1	462.0	396.8	439.3	377.0	274.9
52.5°	18843.2	18049.6	16544.5	8545.8	1516.4	890.0	513.0	360.0	422.3	357.1	249.4
55°	21618.1	19971.3	17502.5	7842.8	1598.6	966.5	606.6	340.1	391.1	334.5	235.3
57.5°	24262.6	21516.1	17919.2	6204.5	1873.5	997.7	663.3	348.6	345.8	306.1	223.9
60°	24625.4	21442.4	17077.4	3608.2	2066.3	943.9	640.6	388.3	303.3	272.1	204.1
62.5°	23253.6	20016.7	15158.5	2250.5	1918.9	924.0	569.7	442.2	274.9	240.9	178.6
65°	21170.3	17780.3	12638.7	1451.2	1454.1	1026.1	498.9	433.7	257.9	212.6	153.1
67.5°	17913.5	14880.7	9957.3	972.2	822.0	875.8	436.5	297.6	252.3	181.4	119.0
70°	13075.2	10592.2	6482.3	649.1	490.4	700.1	365.6	212.6	238.1	150.2	85.0
72.5°	9557.7	7117.2	3619.6	425.2	277.8	408.2	269.3	153.1	184.2	110.5	59.5
75°	6879.1	4897.9	2066.3	272.1	184.2	223.9	175.7	104.9	119.0	87.9	53.9
77.5°	3310.6	2386.6	938.2	150.2	124.7	113.4	93.5	65.2	73.7	79.4	48.2
80°	124.7	93.5	70.9	73.7	79.4	51.0	42.5	34.0	42.5	53.9	25.5
82.5°	0.0	0.0	0.0	8.5	11.3	14.2	17.0	14.2	17.0	19.8	2.8
85°	0.0	0.0	0.0	0.0	0.0	0.0	0.0	0.0	0.0	0.0	0.0
87.5°	0.0	0.0	0.0	0.0	0.0	0.0	0.0	0.0	0.0	0.0	0.0
90°	0.0	0.0	0.0	0.0	0.0	0.0	0.0	0.0	0.0	0.0	0.0



REPORT NUMBER: P643926

CATALOG NUMBER: GWS-SA6F-830-U-SLL-W-HSS

CANDELA DISTRIBUTION (continued):

	90°	95°	105°	115°	125°	135°	145°	155°	165°	175°	180°
0°	1241.5	1241.5	1241.5	1241.5	1241.5	1241.5	1241.5	1241.5	1241.5	1241.5	1241.5
2.5°	1150.8	1145.1	1150.8	1156.4	1162.1	1167.8	1159.3	1164.9	1170.6	1156.4	1162.1
5°	1060.1	1057.2	1074.2	1082.7	1094.1	1099.8	1094.1	1094.1	1091.3	1074.2	1074.2
7.5°	980.7	983.5	997.7	1017.6	1031.7	1040.2	1034.6	1031.7	1023.2	997.7	997.7
10°	921.2	921.2	943.9	960.9	980.7	989.2	983.5	975.0	966.5	941.0	938.2
12.5°	873.0	873.0	890.0	918.4	941.0	952.4	949.5	938.2	924.0	898.5	895.7
15°	827.6	824.8	850.3	875.8	907.0	921.2	915.5	907.0	881.5	858.8	853.2
17.5°	782.3	779.5	802.1	836.2	870.2	890.0	887.2	867.3	844.7	816.3	810.6
20°	736.9	731.3	759.6	793.6	827.6	847.5	841.8	824.8	796.5	768.1	762.5
22.5°	691.6	688.8	708.6	736.9	768.1	785.1	782.3	768.1	739.8	714.3	714.3
25°	640.6	640.6	654.8	674.6	697.3	705.8	708.6	702.9	685.9	671.8	671.8
27.5°	598.1	589.6	595.2	600.9	612.2	626.4	626.4	632.1	634.9	629.2	632.1
30°	564.0	549.9	541.4	530.0	524.4	530.0	535.7	555.5	575.4	586.7	592.4
32.5°	524.4	507.4	484.7	453.5	433.7	428.0	445.0	481.9	518.7	544.2	558.4
35°	484.7	462.0	419.5	374.1	348.6	340.1	360.0	402.5	456.3	501.7	521.5
37.5°	445.0	413.8	354.3	300.4	272.1	266.4	286.3	331.6	394.0	456.3	481.9
40°	399.7	362.8	291.9	235.3	212.6	206.9	223.9	269.3	334.5	405.3	445.0
42.5°	354.3	309.0	235.3	187.1	164.4	164.4	187.1	221.1	280.6	357.1	405.3
45°	309.0	260.8	192.7	150.2	136.1	138.9	153.1	187.1	235.3	314.6	360.0
47.5°	266.4	223.9	158.7	124.7	113.4	116.2	133.2	161.6	201.2	272.1	320.3
50°	229.6	189.9	138.9	104.9	96.4	102.0	119.0	144.6	178.6	240.9	280.6
52.5°	206.9	170.1	127.5	90.7	85.0	90.7	107.7	130.4	161.6	212.6	252.3
55°	195.6	167.2	127.5	82.2	73.7	79.4	96.4	119.0	144.6	192.7	226.8
57.5°	192.7	172.9	136.1	73.7	62.4	68.0	85.0	107.7	133.2	175.7	204.1
60°	181.4	164.4	133.2	59.5	48.2	56.7	70.9	93.5	121.9	164.4	189.9
62.5°	158.7	144.6	116.2	48.2	36.8	42.5	59.5	82.2	110.5	150.2	178.6
65°	130.4	116.2	90.7	31.2	22.7	28.3	45.4	70.9	96.4	136.1	161.6
67.5°	96.4	82.2	62.4	19.8	11.3	19.8	36.8	59.5	87.9	121.9	147.4
70°	59.5	48.2	34.0	11.3	8.5	17.0	34.0	56.7	79.4	113.4	138.9
72.5°	34.0	22.7	14.2	5.7	8.5	17.0	34.0	56.7	76.5	107.7	130.4
75°	25.5	14.2	5.7	2.8	5.7	14.2	31.2	51.0	73.7	102.0	124.7
77.5°	17.0	8.5	2.8	0.0	2.8	11.3	28.3	48.2	68.0	96.4	119.0
80°	2.8	0.0	0.0	0.0	0.0	8.5	25.5	42.5	62.4	85.0	104.9
82.5°	0.0	0.0	0.0	0.0	0.0	2.8	19.8	36.8	53.9	70.9	85.0
85°	0.0	0.0	0.0	0.0	0.0	0.0	11.3	28.3	42.5	53.9	59.5
87.5°	0.0	0.0	0.0	0.0	0.0	0.0	0.0	14.2	28.3	34.0	39.7
90°	0.0	0.0	0.0	0.0	0.0	0.0	0.0	0.0	0.0	0.0	0.0



REPORT NUMBER: P643926
 CATALOG NUMBER: GWS-SA6F-830-U-SLL-W-HSS

CANDELA DISTRIBUTION (continued):

	185°	195°	205°	215°	225°	235°	245°	255°	265°	270°	275°
0°	1241.5	1241.5	1241.5	1241.5	1241.5	1241.5	1241.5	1241.5	1241.5	1241.5	1241.5
2.5°	1159.3	1176.3	1176.3	1187.6	1201.8	1227.3	1241.5	1261.3	1275.5	1289.7	1295.3
5°	1071.4	1074.2	1077.1	1082.7	1099.8	1128.1	1153.6	1184.8	1221.6	1250.0	1267.0
7.5°	997.7	997.7	997.7	1006.2	1023.2	1043.1	1068.6	1111.1	1153.6	1187.6	1216.0
10°	935.4	943.9	946.7	960.9	980.7	1006.2	1034.6	1071.4	1119.6	1164.9	1216.0
12.5°	895.7	904.2	918.4	932.5	952.4	980.7	1011.9	1060.1	1159.3	1252.8	1360.5
15°	858.8	870.2	887.2	907.0	929.7	960.9	994.9	1094.1	1326.5	1502.2	1672.3
17.5°	819.1	836.2	858.8	878.7	907.0	941.0	983.5	1176.3	1632.6	1924.6	2213.7
20°	768.1	790.8	816.3	847.5	881.5	921.2	983.5	1346.3	2074.8	2494.3	2876.9
22.5°	719.9	742.6	773.8	813.5	853.2	892.8	997.7	1604.3	2644.5	3174.5	3659.2
25°	680.3	708.6	739.8	773.8	819.1	864.5	1031.7	1967.1	3330.4	4013.5	4356.5
27.5°	643.4	677.4	708.6	736.9	776.6	827.6	1108.3	2451.8	4141.1	4835.5	5104.8
30°	606.6	646.2	677.4	705.8	745.5	799.3	1224.5	3069.7	5042.4	5717.0	5745.4
32.5°	575.4	612.2	649.1	677.4	714.3	776.6	1386.0	3792.4	5966.4	6618.4	6351.9
35°	541.4	583.9	617.9	649.1	688.8	756.8	1573.1	4571.9	6899.0	7446.0	6955.7
37.5°	507.4	555.5	598.1	620.7	660.4	736.9	1709.2	5385.4	7851.3	8253.8	7485.7
40°	476.2	530.0	578.2	600.9	620.7	711.4	1729.0	6218.7	8817.9	9050.3	7984.6
42.5°	442.2	501.7	544.2	575.4	592.4	694.4	1609.9	6921.6	9628.5	9843.9	8636.5
45°	405.3	476.2	510.2	532.9	566.9	705.8	1456.9	7465.9	10555.4	10926.7	9710.7
47.5°	368.5	447.8	476.2	493.2	538.5	773.8	1400.2	7828.7	12083.1	12854.1	11521.9
50°	334.5	422.3	453.5	450.7	532.9	861.7	1462.6	8103.6	14379.0	15286.0	14004.9
52.5°	297.6	394.0	430.8	419.5	575.4	929.7	1587.3	8321.8	16144.8	18137.4	17341.0
55°	266.4	362.8	396.8	394.0	654.8	980.7	1683.6	7171.1	16876.1	20787.6	21099.4
57.5°	243.8	328.8	357.1	405.3	705.8	980.7	1947.2	5090.6	16890.3	22737.7	26088.0
60°	223.9	297.6	317.5	445.0	685.9	929.7	1927.4	3117.9	15566.6	22604.5	28741.0
62.5°	206.9	269.3	294.8	456.3	606.6	921.2	1740.3	1933.1	13276.4	20884.0	26816.4
65°	192.7	246.6	283.4	419.5	549.9	986.4	1173.4	1388.9	10768.0	18922.6	24608.4
67.5°	178.6	226.8	300.4	343.0	498.9	881.5	847.5	986.4	8452.2	16771.2	22581.8
70°	167.2	215.4	317.5	280.6	436.5	688.8	600.9	748.3	6471.0	13993.5	19727.5
72.5°	158.7	201.2	266.4	221.1	354.3	532.9	419.5	544.2	4229.0	10923.8	16082.5
75°	150.2	184.2	195.6	178.6	263.6	348.6	317.5	365.6	2519.8	7984.6	12202.2
77.5°	147.4	172.9	158.7	144.6	178.6	206.9	240.9	246.6	1230.1	3993.7	6394.4
80°	130.4	155.9	136.1	119.0	121.9	136.1	178.6	164.4	280.6	1014.7	1706.3
82.5°	102.0	121.9	113.4	99.2	99.2	99.2	119.0	110.5	90.7	456.3	771.0
85°	70.9	85.0	85.0	79.4	76.5	76.5	73.7	70.9	25.5	28.3	42.5
87.5°	48.2	59.5	62.4	59.5	51.0	45.4	39.7	34.0	11.3	0.0	5.7
90°	0.0	0.0	0.0	0.0	0.0	0.0	0.0	0.0	0.0	0.0	0.0



REPORT NUMBER: P643926

CATALOG NUMBER: GWS-SA6F-830-U-SLL-W-HSS

CANDELA DISTRIBUTION (continued):

	285°	295°	305°	315°	325°	335°	345°	355°	358°	360°
0°	1241.5	1241.5	1241.5	1241.5	1241.5	1241.5	1241.5	1241.5	1241.5	1241.5
2.5°	1315.2	1323.7	1323.7	1312.3	1303.8	1281.2	1258.5	1235.8	1230.1	1227.3
5°	1315.2	1349.2	1366.2	1363.4	1343.5	1306.7	1258.5	1207.5	1193.3	1187.6
7.5°	1295.3	1360.5	1411.5	1420.0	1383.2	1318.0	1230.1	1153.6	1133.8	1125.3
10°	1340.7	1468.2	1570.3	1584.4	1541.9	1414.4	1272.7	1142.3	1111.1	1091.3
12.5°	1584.4	1794.2	1918.9	1978.4	1896.2	1734.7	1499.4	1267.0	1196.1	1164.9
15°	2077.6	2375.2	2613.3	2613.3	2536.8	2250.5	1952.9	1575.9	1479.6	1394.5
17.5°	2709.7	3083.8	3293.6	3270.9	3154.7	2953.5	2596.3	2055.0	1859.4	1771.5
20°	3429.6	3653.6	3701.7	3687.6	3636.6	3520.3	3273.8	2692.7	2429.1	2293.0
22.5°	4053.2	3993.7	3922.8	3866.1	3852.0	3886.0	3852.0	3404.1	3197.2	2956.3
25°	4475.5	4138.2	3925.7	3823.6	3871.8	4067.4	4280.0	4112.7	3948.3	3698.9
27.5°	4705.1	4121.2	3815.1	3710.3	3792.4	4070.2	4532.2	4815.7	4645.6	4526.6
30°	4829.8	4107.1	3744.3	3642.2	3766.9	4115.6	4708.0	5473.3	5478.9	5289.0
32.5°	5008.4	4197.8	3758.4	3664.9	3832.1	4251.6	4929.1	6142.2	6306.6	6204.5
35°	5209.7	4336.7	3823.6	3738.6	3945.5	4433.0	5175.6	6816.8	7159.7	7125.7
37.5°	5399.6	4492.6	3976.7	3894.5	4118.4	4588.9	5413.7	7480.0	7956.2	8075.3
40°	5598.0	4710.8	4447.2	4526.6	4651.3	4835.5	5626.3	8055.4	8832.0	9010.6
42.5°	6065.7	5467.6	5870.1	6020.3	6037.3	5657.5	6091.2	8792.4	9693.7	9906.3
45°	7108.7	6813.9	7967.5	8180.1	8069.6	6918.8	7210.8	9855.3	10898.3	11006.0
47.5°	8426.7	8562.8	10838.8	11572.9	10909.7	8406.9	8568.4	12091.6	13103.5	13063.8
50°	9963.0	10606.4	14098.4	15830.2	14242.9	10340.0	10133.0	14841.0	16068.3	15946.4
52.5°	11779.8	12981.6	18015.6	20475.8	18973.6	12514.0	12428.9	18483.2	19231.5	18843.2
55°	14067.2	15274.7	22522.3	25960.4	23823.3	15167.0	15458.9	22706.5	22851.1	21618.1
57.5°	17479.8	18265.0	27834.0	32250.0	28885.5	18772.3	20889.7	28327.2	26598.2	24262.6
60°	23675.9	22111.3	32967.1	38684.1	34270.9	23843.1	28052.2	31657.6	27845.3	24625.4
62.5°	25832.9	25376.5	36181.3	41405.2	37893.3	28006.9	29914.4	29769.9	26229.7	23253.6
65°	22564.8	24563.1	35605.9	39968.1	37428.5	27320.9	26844.8	27686.6	24410.0	21170.3
67.5°	20844.3	22652.7	33426.3	36002.8	34852.0	24993.9	23928.1	23698.6	20492.8	17913.5
70°	19109.6	20901.0	30265.9	30586.2	30050.5	21201.4	19801.2	18262.1	15317.2	13075.2
72.5°	17023.5	18009.9	25881.1	24361.8	23755.2	16652.2	16357.4	13752.6	11482.2	9557.7
75°	14846.7	14560.4	20178.2	16720.2	17173.7	12956.1	13814.9	10099.0	8412.5	6879.1
77.5°	10799.1	10586.5	13514.5	10155.7	11247.0	8486.2	7624.6	4030.5	3837.8	3310.6
80°	6026.0	7264.6	7298.6	5691.5	7100.2	5532.8	1907.6	133.2	85.0	124.7
82.5°	2800.4	3123.5	3956.8	2638.8	4050.4	2740.9	394.0	0.0	0.0	0.0
85°	907.0	1326.5	1111.1	388.3	980.7	926.9	65.2	0.0	0.0	0.0
87.5°	53.9	110.5	28.3	0.0	0.0	0.0	0.0	0.0	0.0	0.0
90°	0.0	0.0	0.0	0.0	0.0	0.0	0.0	0.0	0.0	0.0

Cooper Lighting Solutions Photometric Lab
1121 Highway 74 South
Peachtree City, GA 30269



LM-79-2019: Approved Method: Electrical and Photometric Measurements of Solid-State Lighting Products

Report Prepared for

Cooper Lighting Solutions

MCGRAW EDISON

Report Number: SP1-2408-195-9

Test Date: 08/07/2024

Luminaire Tested: GALN-SB1A-830-U-5WQ

Data in this report applies to families of products including GALN-SB1A-830-U-5WQ.

Test Information

Test Method: LM-79-2019
 Report Number: SP1-2408-195-9
 Test Lab: COOPER LIGHTING SOLUTIONS
 Photometer: SP1 - 76IN SPHERE
 Measurement Geometry: 4π
 Issue Date: 08/07/2024
 Manufacturer: COOPER LIGHTING SOLUTIONS
 Product Line: MCGRAW EDISON
 Catalog Number: **GALN-SB1A-830-U-5WQ**
 Description: GALLEON AREA AND ROADWAY LUMINAIRE. (1) 80 CRI, 3000K, 350MA HIGH DENSITY LIGHTSQUARE WITH 26 LEDS AND TYPE V WIDE OPTICS

Spectral Parameters

CCT (K): 3050
 CIE u': 0.2476
 CIE v': 0.5251
 Duv: 0.0034
 CIE x: 0.4383
 CIE y: 0.4131
 CIE z: 0.1487
 Peak Wavelength (nm): 603
 Dominant Wavelength (nm): 581
 Purity: 55.55201
 Rf: 81.5
 Rg: 99.2

CRI (Ra):	81.0		
R1:	79.6	R9:	7.1
R2:	85.6	R10:	67.0
R3:	92.0	R11:	82.7
R4:	82.6	R12:	63.2
R5:	78.9	R13:	80.3
R6:	81.7	R14:	95.0
R7:	85.2	R15:	71.7
R8:	62.0		



Test Conditions

Stabilization Time: 20M
 Operation Time: 1H 20M
 Sphere Temperature (°C): 24.2

REPORT NUMBER: SP1-2408-195-9

Measurement and Test Equipment			
Instrument	Identification Number	Calibration Date	Calibration Due Date
Photometer	IN0058	6/18/2024	12/18/2024
Power Meter	INXT2011004	2/8/2024	2/8/2025
AC Power Source	IN0063	10/24/2023	10/24/2024
DC Power Source	IN0208	10/24/2023	10/24/2024
Sphere Thermometer	IN0085	10/24/2023	10/24/2024
Room Thermometer	IN0046	10/24/2023	10/24/2024

REPORT NUMBER: SP1-2408-195-9

CIE 1931 Chromaticity Diagram



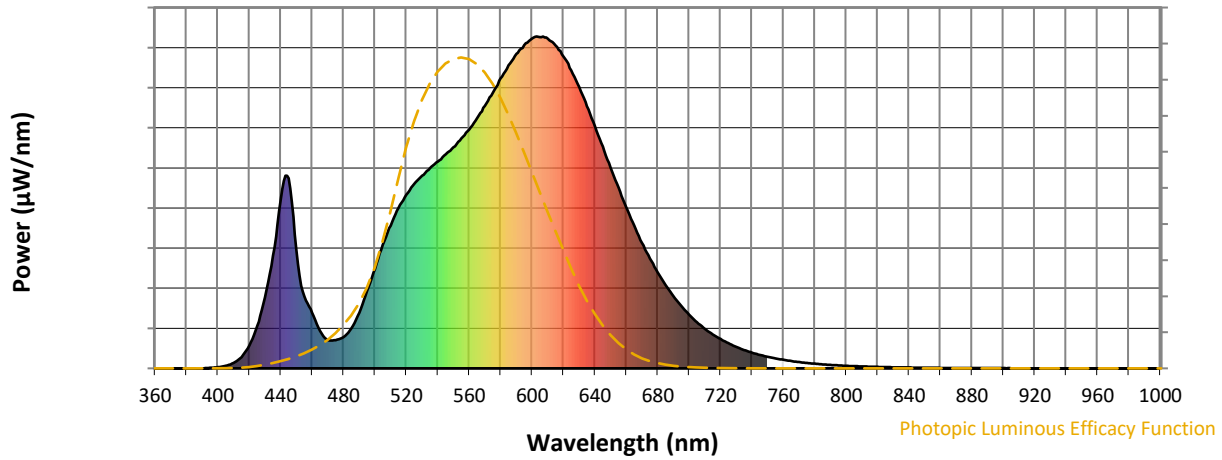
CIE 1931 Chromaticity Diagram with 2017 ANSI 7-Step and 4-Step Quadrangles



Point lies inside the ANSI 3000K 4-step quadrangle

REPORT NUMBER: SP1-2408-195-9

Photopic Flux vs. Wavelength



Photopic Lumens: NR

λ (nm)	Power W [^] /nm	Lumens (ϕ /nm)	λ (nm)	Power W [^] /nm	Lumens (ϕ /nm)	λ (nm)	Power W [^] /nm	Lumens (ϕ /nm)	λ (nm)	Power W [^] /nm	Lumens (ϕ /nm)	λ (nm)	Power W [^] /nm	Lumens (ϕ /nm)
360	0	NR	490	168	NR	620	940	NR	750	35	NR	880	1	NR
365	0	NR	495	233	NR	625	897	NR	755	30	NR	885	1	NR
370	0	NR	500	300	NR	630	847	NR	760	26	NR	890	1	NR
375	0	NR	505	372	NR	635	790	NR	765	22	NR	895	1	NR
380	0	NR	510	430	NR	640	730	NR	770	19	NR	900	1	NR
385	0	NR	515	483	NR	645	668	NR	775	16	NR	905	1	NR
390	0	NR	520	524	NR	650	605	NR	780	14	NR	910	0	NR
395	2	NR	525	555	NR	655	545	NR	785	12	NR	915	0	NR
400	4	NR	530	581	NR	660	485	NR	790	10	NR	920	0	NR
405	7	NR	535	604	NR	665	430	NR	795	9	NR	925	0	NR
410	17	NR	540	623	NR	670	378	NR	800	8	NR	930	0	NR
415	34	NR	545	645	NR	675	331	NR	805	7	NR	935	0	NR
420	68	NR	550	667	NR	680	290	NR	810	6	NR	940	0	NR
425	128	NR	555	693	NR	685	251	NR	815	5	NR	945	0	NR
430	214	NR	560	719	NR	690	218	NR	820	4	NR	950	0	NR
435	339	NR	565	754	NR	695	188	NR	825	4	NR	955	0	NR
440	507	NR	570	791	NR	700	162	NR	830	3	NR	960	0	NR
445	573	NR	575	830	NR	705	139	NR	835	3	NR	965	0	NR
450	356	NR	580	873	NR	710	119	NR	840	3	NR	970	0	NR
455	217	NR	585	913	NR	715	102	NR	845	2	NR	975	0	NR
460	168	NR	590	948	NR	720	88	NR	850	2	NR	980	0	NR
465	113	NR	595	974	NR	725	76	NR	855	2	NR	985	0	NR
470	85	NR	600	994	NR	730	65	NR	860	1	NR	990	0	NR
475	85	NR	605	998	NR	735	55	NR	865	1	NR	995	0	NR
480	94	NR	610	994	NR	740	47	NR	870	1	NR	1000	0	NR
485	120	NR	615	973	NR	745	41	NR	875	1	NR			

REPORT NUMBER: SP1-2408-195-9

Scotopic Flux vs. Wavelength



Scotopic Lumens: NR

S/P: 1.27

λ (nm)	Power W [^] /nm	Lumens (φ/nm)	λ (nm)	Power W [^] /nm	Lumens (φ/nm)	λ (nm)	Power W [^] /nm	Lumens (φ/nm)	λ (nm)	Power W [^] /nm	Lumens (φ/nm)	λ (nm)	Power W [^] /nm	Lumens (φ/nm)
360	0	NR	490	168	NR	620	940	NR	750	35	NR	880	1	NR
365	0	NR	495	233	NR	625	897	NR	755	30	NR	885	1	NR
370	0	NR	500	300	NR	630	847	NR	760	26	NR	890	1	NR
375	0	NR	505	372	NR	635	790	NR	765	22	NR	895	1	NR
380	0	NR	510	430	NR	640	730	NR	770	19	NR	900	1	NR
385	0	NR	515	483	NR	645	668	NR	775	16	NR	905	1	NR
390	0	NR	520	524	NR	650	605	NR	780	14	NR	910	0	NR
395	2	NR	525	555	NR	655	545	NR	785	12	NR	915	0	NR
400	4	NR	530	581	NR	660	485	NR	790	10	NR	920	0	NR
405	7	NR	535	604	NR	665	430	NR	795	9	NR	925	0	NR
410	17	NR	540	623	NR	670	378	NR	800	8	NR	930	0	NR
415	34	NR	545	645	NR	675	331	NR	805	7	NR	935	0	NR
420	68	NR	550	667	NR	680	290	NR	810	6	NR	940	0	NR
425	128	NR	555	693	NR	685	251	NR	815	5	NR	945	0	NR
430	214	NR	560	719	NR	690	218	NR	820	4	NR	950	0	NR
435	339	NR	565	754	NR	695	188	NR	825	4	NR	955	0	NR
440	507	NR	570	791	NR	700	162	NR	830	3	NR	960	0	NR
445	573	NR	575	830	NR	705	139	NR	835	3	NR	965	0	NR
450	356	NR	580	873	NR	710	119	NR	840	3	NR	970	0	NR
455	217	NR	585	913	NR	715	102	NR	845	2	NR	975	0	NR
460	168	NR	590	948	NR	720	88	NR	850	2	NR	980	0	NR
465	113	NR	595	974	NR	725	76	NR	855	2	NR	985	0	NR
470	85	NR	600	994	NR	730	65	NR	860	1	NR	990	0	NR
475	85	NR	605	998	NR	735	55	NR	865	1	NR	995	0	NR
480	94	NR	610	994	NR	740	47	NR	870	1	NR	1000	0	NR
485	120	NR	615	973	NR	745	41	NR	875	1	NR			

REPORT NUMBER: SP1-2408-195-9

Melanopic Flux vs. Wavelength



Melanopic Lumens: NR

M/P: 2.32

λ (nm)	Power W [^] /nm	Lumens (ϕ /nm)	λ (nm)	Power W [^] /nm	Lumens (ϕ /nm)	λ (nm)	Power W [^] /nm	Lumens (ϕ /nm)	λ (nm)	Power W [^] /nm	Lumens (ϕ /nm)	λ (nm)	Power W [^] /nm	Lumens (ϕ /nm)
360	0	NR	490	168	NR	620	940	NR	750	35	NR	880	1	NR
365	0	NR	495	233	NR	625	897	NR	755	30	NR	885	1	NR
370	0	NR	500	300	NR	630	847	NR	760	26	NR	890	1	NR
375	0	NR	505	372	NR	635	790	NR	765	22	NR	895	1	NR
380	0	NR	510	430	NR	640	730	NR	770	19	NR	900	1	NR
385	0	NR	515	483	NR	645	668	NR	775	16	NR	905	1	NR
390	0	NR	520	524	NR	650	605	NR	780	14	NR	910	0	NR
395	2	NR	525	555	NR	655	545	NR	785	12	NR	915	0	NR
400	4	NR	530	581	NR	660	485	NR	790	10	NR	920	0	NR
405	7	NR	535	604	NR	665	430	NR	795	9	NR	925	0	NR
410	17	NR	540	623	NR	670	378	NR	800	8	NR	930	0	NR
415	34	NR	545	645	NR	675	331	NR	805	7	NR	935	0	NR
420	68	NR	550	667	NR	680	290	NR	810	6	NR	940	0	NR
425	128	NR	555	693	NR	685	251	NR	815	5	NR	945	0	NR
430	214	NR	560	719	NR	690	218	NR	820	4	NR	950	0	NR
435	339	NR	565	754	NR	695	188	NR	825	4	NR	955	0	NR
440	507	NR	570	791	NR	700	162	NR	830	3	NR	960	0	NR
445	573	NR	575	830	NR	705	139	NR	835	3	NR	965	0	NR
450	356	NR	580	873	NR	710	119	NR	840	3	NR	970	0	NR
455	217	NR	585	913	NR	715	102	NR	845	2	NR	975	0	NR
460	168	NR	590	948	NR	720	88	NR	850	2	NR	980	0	NR
465	113	NR	595	974	NR	725	76	NR	855	2	NR	985	0	NR
470	85	NR	600	994	NR	730	65	NR	860	1	NR	990	0	NR
475	85	NR	605	998	NR	735	55	NR	865	1	NR	995	0	NR
480	94	NR	610	994	NR	740	47	NR	870	1	NR	1000	0	NR
485	120	NR	615	973	NR	745	41	NR	875	1	NR			

Summary

$R_f = 81.5$
 $R_g = 99.2$
 $CIE R_a = 81.0$
 $R_9 = 7.1$



Color Vector Graphics

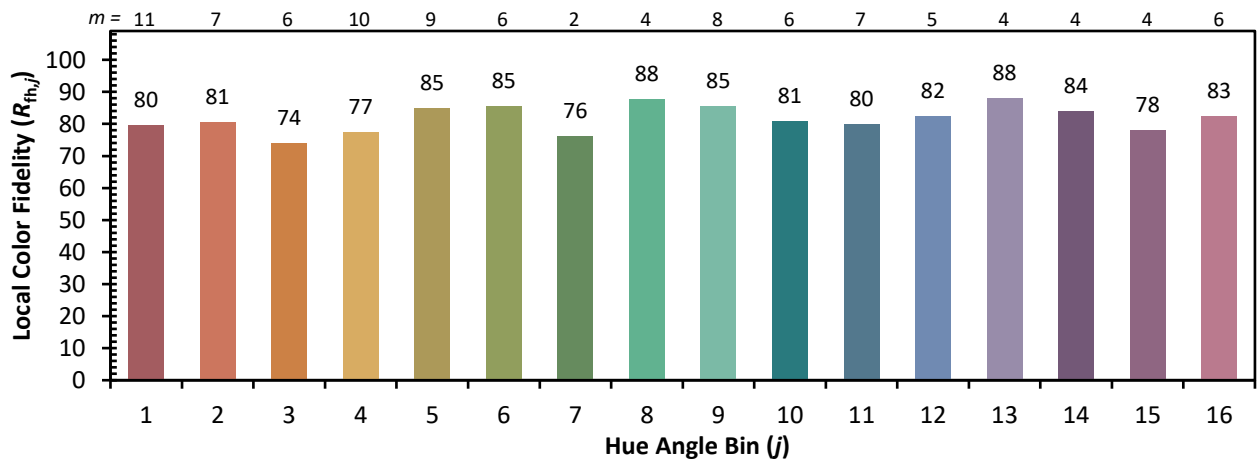
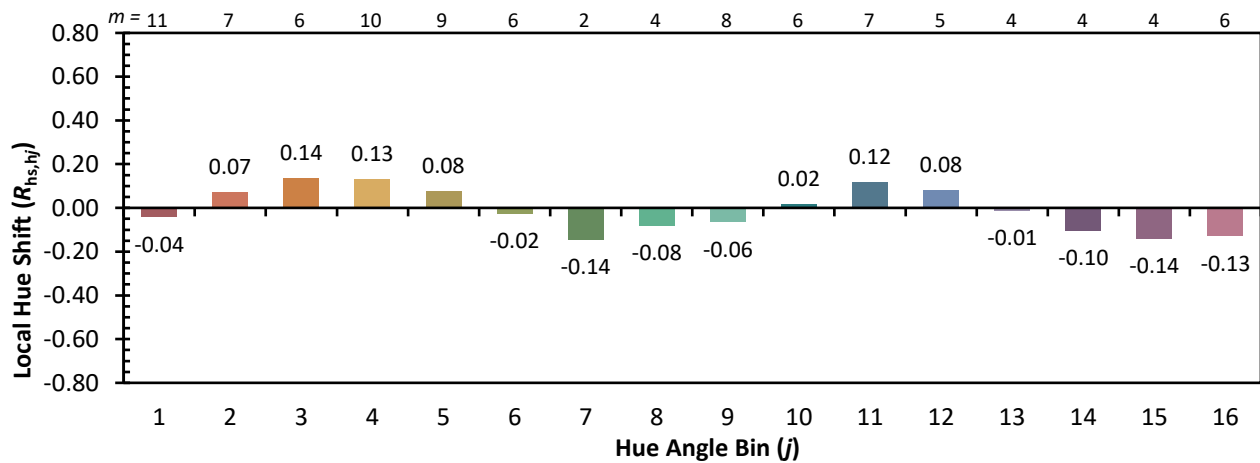
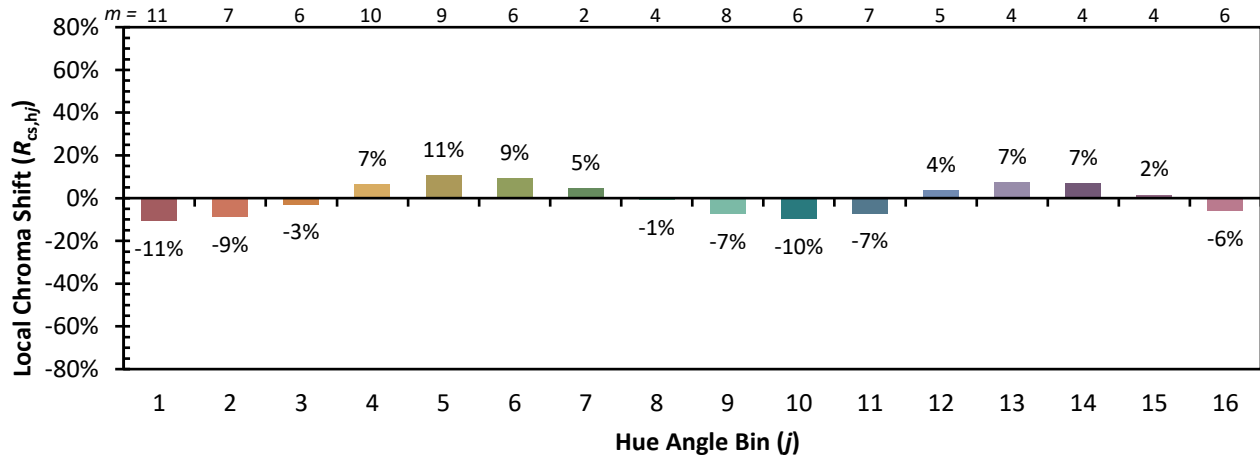


Individual Sample Fidelity Index ($R_{f,i}$)

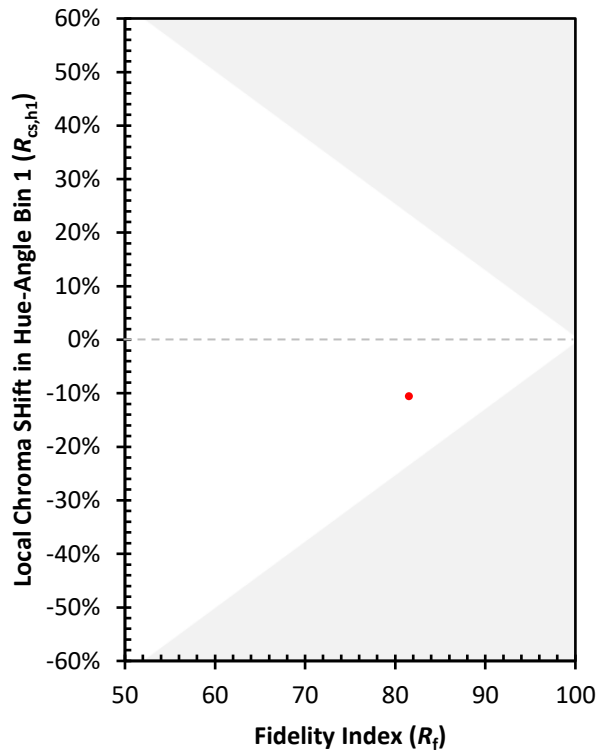
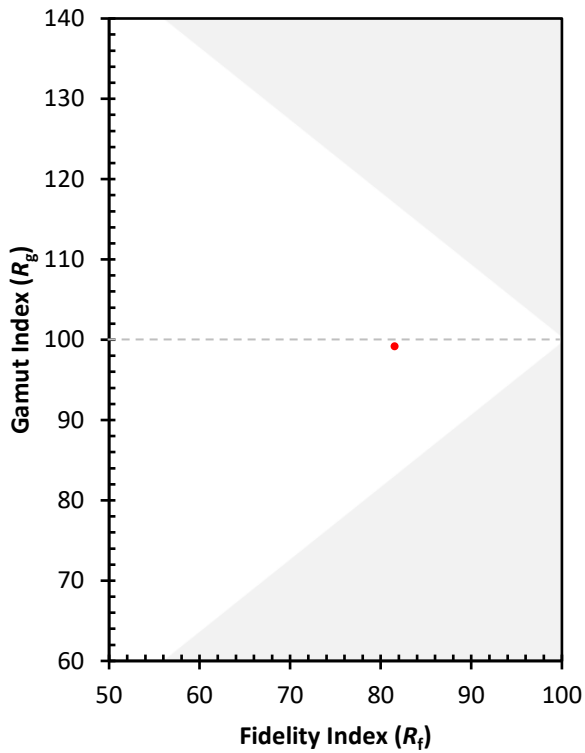
CES01 = 86	CES26 = 74	CES51 = 89	CES76 = 70
CES02 = 63	CES27 = 88	CES52 = 92	CES77 = 86
CES03 = 31	CES28 = 89	CES53 = 81	CES78 = 72
CES04 = 70	CES29 = 67	CES54 = 87	CES79 = 90
CES05 = 50	CES30 = 68	CES55 = 85	CES80 = 88
CES06 = 51	CES31 = 71	CES56 = 78	CES81 = 78
CES07 = 42	CES32 = 70	CES57 = 76	CES82 = 95
CES08 = 41	CES33 = 71	CES58 = 78	CES83 = 90
CES09 = 29	CES34 = 82	CES59 = 92	CES84 = 94
CES10 = 76	CES35 = 90	CES60 = 95	CES85 = 86
CES11 = 59	CES36 = 93	CES61 = 93	CES86 = 72
CES12 = 65	CES37 = 87	CES62 = 83	CES87 = 85
CES13 = 43	CES38 = 75	CES63 = 77	CES88 = 83
CES14 = 74	CES39 = 94	CES64 = 83	CES89 = 75
CES15 = 71	CES40 = 89	CES65 = 77	CES90 = 81
CES16 = 47	CES41 = 85	CES66 = 80	CES91 = 96
CES17 = 50	CES42 = 86	CES67 = 79	CES92 = 73
CES18 = 56	CES43 = 81	CES68 = 84	CES93 = 84
CES19 = 72	CES44 = 99	CES69 = 91	CES94 = 64
CES20 = 66	CES45 = 87	CES70 = 78	CES95 = 80
CES21 = 87	CES46 = 82	CES71 = 76	CES96 = 84
CES22 = 79	CES47 = 77	CES72 = 92	CES97 = 87
CES23 = 92	CES48 = 71	CES73 = 71	CES98 = 81
CES24 = 91	CES49 = 81	CES74 = 93	CES99 = 74
CES25 = 72	CES50 = 89	CES75 = 74	



Color Rendition by Hue-Angle Bin



Measure Comparisons



(END OF REPORT)